

# TORNADO PC LED



oms

LED

TORNADO PC LED 1.2



TORNADO PC LED 1.5



**UPDATED  
VALUES**

up to netto  
**5650  
lm**

up to netto  
**111  
lm/W**

**80  
Ra**

**IP65**

**passive  
cooling**

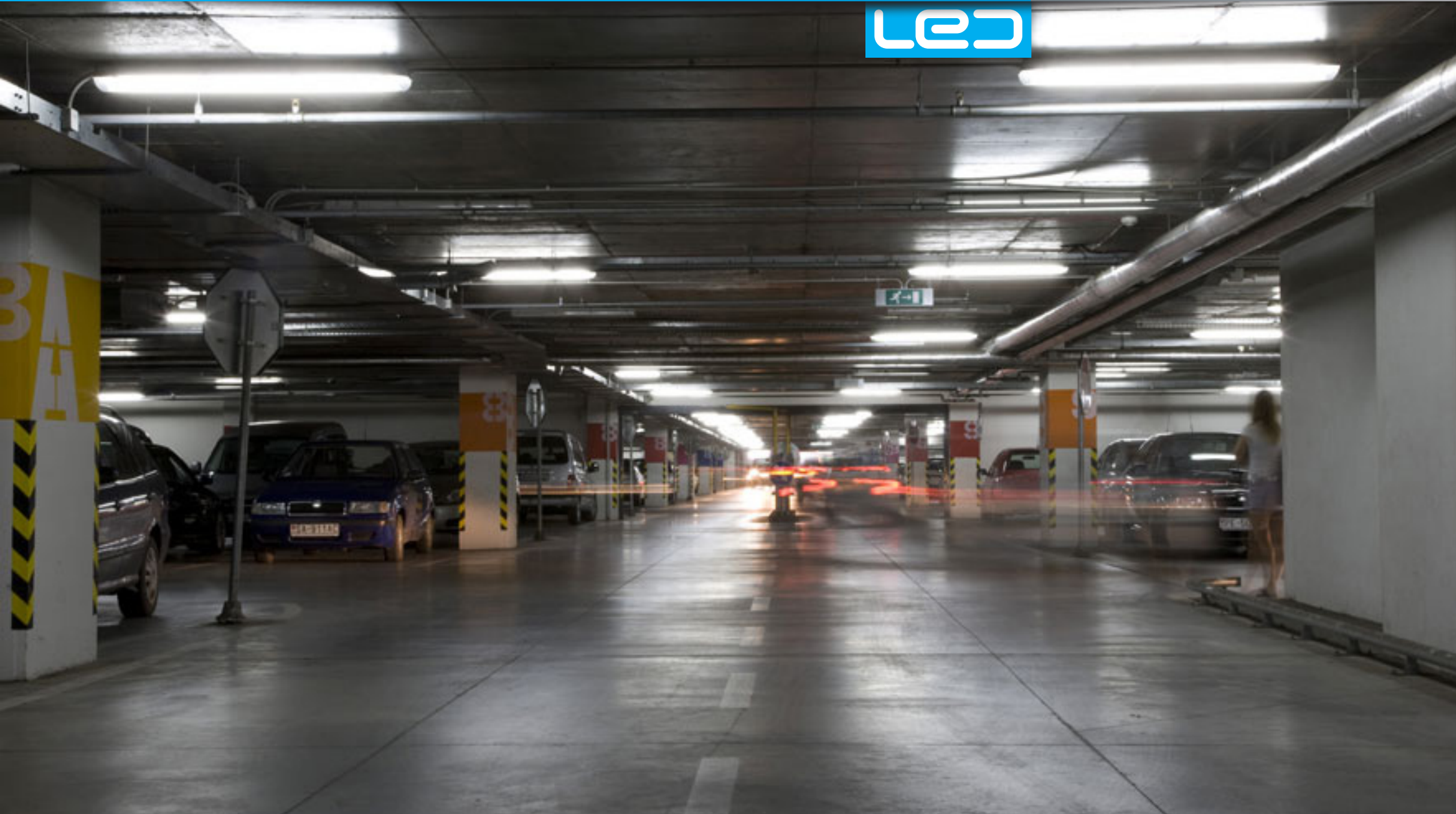
TOUGH EFFECTIVE  
AND HIGHLY EFFICIENT

# TORNADO PC LED



oms

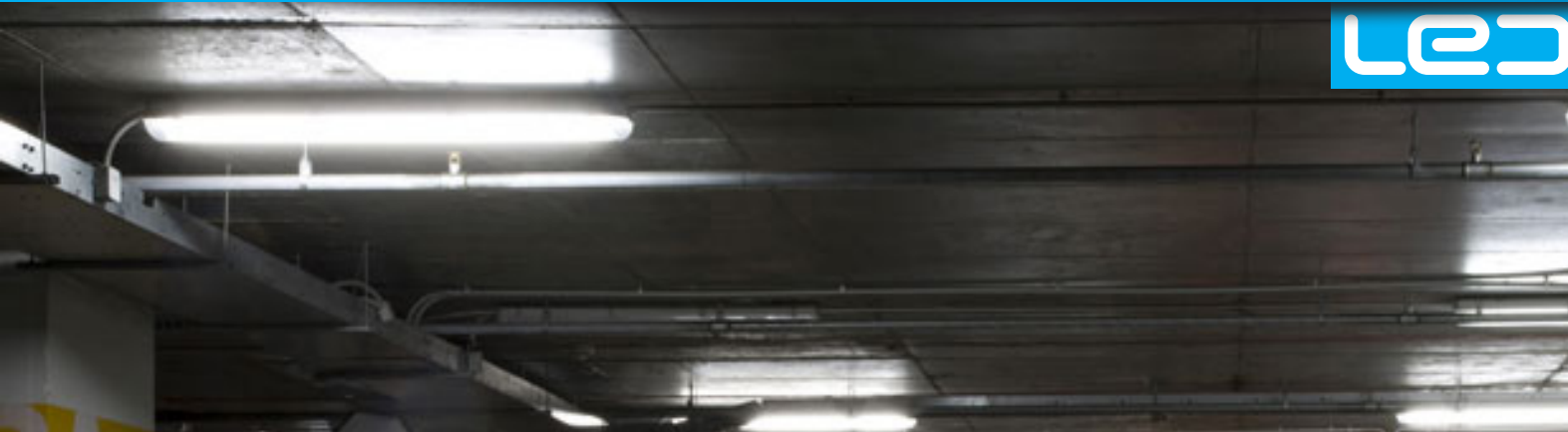
LED



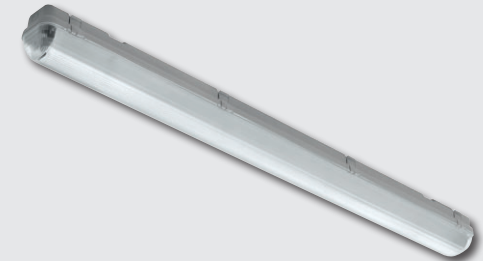
# TORNADO PC LED



oms



LED



TORNADO PC LED 1.2



TORNADO PC LED 1.5

## Benefits

- High IP protection degree (IP65)
- Fast and simple installation
- Latest LED technology ensures low maintenance costs

## Key features

- High system efficacy (up to 111 lm/W)
- Correlated colour temperature of 3000 K or 4000 K
- Up to 2 x 36 W linear fluorescent lamp replacement

## Areas of applications

- Storehouses, industrial areas, petrol stations, corridors, garages, basements





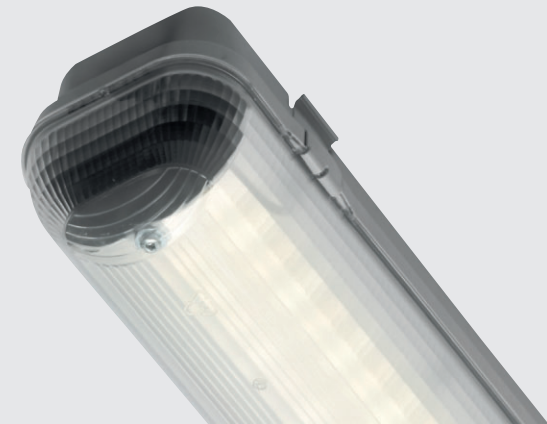
# TORNADO PC LED



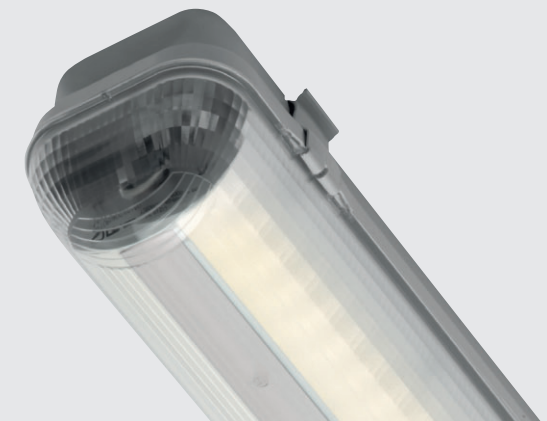
oms

LED

<b>Mounting</b>	Ceiling recessed Wall mounted Suspended
<b>Light source</b>	LED
<b>Optical system</b>	Diffuser
<b>Light distribution</b>	Direct
<b>Wiring</b>	Electronic control gear Through-wiring (three options of phaseconnection – L1 / L2 / L3 – version with connector WIELAND RST 20i5) On request: Dimmable electronic control gear DALI (10–100%) / (1–10 V)
<b>Materials</b>	Housing: injected polycarbonate (grey) Diffuser: injected polycarbonate (grey) Clips: polycarbonate or stainless steel (inox) Installation plate: sheet steel
<b>Accessories</b>	On request: PG 13.5 grommet Rope suspension
<b>Service lifetime</b>	50,000 hrs / L70
<b>Ambient temperature</b>	up to + 35 °C



TORNADO PC LED



TORNADO PC LED WIDE



# TORNADO PC LED



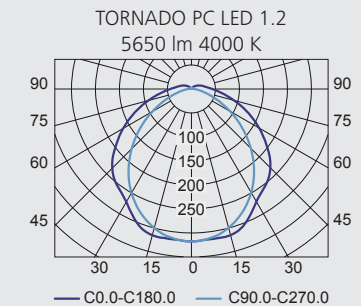
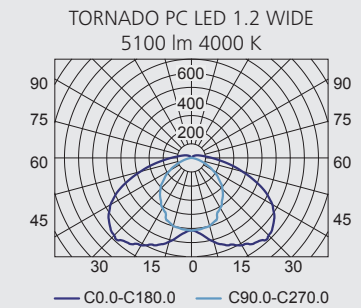
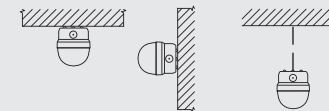
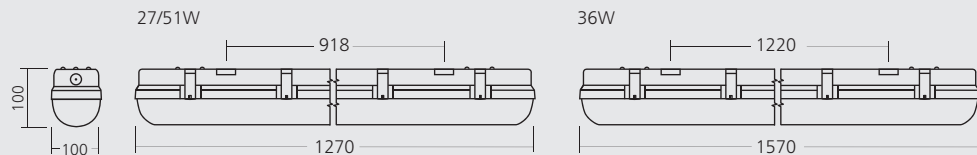
oms

LED

STANDARD



ON REQUEST



Type	optical system	net lumen output (at Ta = 25 °C) (lm)	power consumption (W)	colour rendering index CRI (Ra)	correlated colour temperature CCT (K)	thermal management	weight (kg)
TORNADO PC LED 1.2 WIDE	PRISMATIC	2550	27	80	3000	PASSIVE	2.6
TORNADO PC LED 1.2 WIDE		2700	27	80	4000		2.6
TORNADO PC LED 1.5 WIDE		3400	36	80	3000		3.5
TORNADO PC LED 1.5 WIDE		3600	36	80	4000		3.5
TORNADO PC LED 1.2 WIDE		4800	51	80	3000		2.6
TORNADO PC LED 1.2 WIDE		5100	51	80	4000		2.6
TORNADO PC LED 1.2		2800	27	80	3000		1.7
TORNADO PC LED 1.2		3000	27	80	4000		1.7
TORNADO PC LED 1.5		3750	36	80	3000		2.6
TORNADO PC LED 1.5		4000	36	80	4000		2.6
TORNADO PC LED 1.2		5300	51	80	3000		1.7
TORNADO PC LED 1.2		5650	51	80	4000		1.7

Luminous flux tolerance +/- 10%



# TORNADO PC LED



oms

LED

## MAIN ADVANTAGES OF TORNADO PC LED 1.2 WIDE IN COMPARISON TO

### TORNADO PC 2 x 36 W FD (T8)

**ENERGY SAVING**

**31%**

Name of luminaire	TORNADO PC 2 x 36 W	TORNADO PC LED 1.2 WIDE
Light source	FD (T8)	LED
Luminous flux of installed light sources (lm)	6700	5100
LOR (%)	81	100
Net lumen output (at Ta = 25 °C)	5400	5100
Power consumption (W)	68	51
System efficacy of luminaire (lm/W)	79	100
Average illumination of workplane (lx)*	306	322
Number of luminaires *	38	35
Energy consumption (kWh/year)	22,636	15,637

\* EN 12464-1 indicates that industrial areas must be illuminated at a level of 300 lux.  
Lighting Study carried out for an industry area of 400m<sup>2</sup> (height of room 5 m).

The manufacturer reserves the right to make modifications. All rights reserved. All physical and technical parameters were set with the highest care.  
However any unexpected errors can occur and cannot be excluded.



'FOLLOW THE RIGHT LIGHT'  
THANK YOU



oms



HEAD OFFICE OMS, spol. s r. o., 419 Dojč, 906 02 Dojč, Slovak Republic  
marketing@oms.sk  
www.omslighting.com

